

**1. B - Mansion**

Category 'A' represents temporary houses and category 'B' represents permanent houses. Mansion is a permanent house.

---

**2. C - C**

Water transport is cheaper as compared to air transport and it is preferred for transferring goods between continents due to its low cost.

---

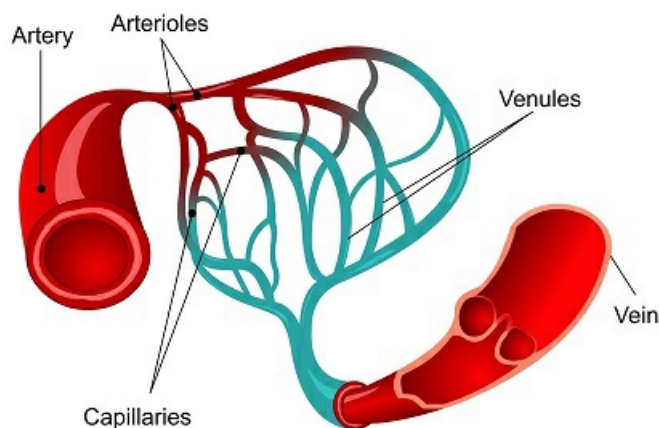
**3. B - Television****4. B - Tides****5. C - Enamel**

Enamel is a substance which covers the tooth crown. It is white in color. It prevents teeth from decay. It is the hardest substance in the human body.

---

**6. C - Capillaries**

Capillaries are smallest of all blood vessels that form the connection between veins and arteries.



**7. D - All of these.**

Stem is part of shoot system. Stem grow above the soil. Stem performs following functions :

- 1) It supports the plant.
- 2) It supplies water and minerals from roots to other parts of the plant.
- 3) It supplies food from leaves to other parts of the plant.
- 4) It also acts as storage for food.

Some stems are edible, e.g. sugarcane, potato, garlic and leeks etc.

Some stems are woody and some stems are soft.

Plants breathe through all parts including roots and stem.

---

**8. C - Both are correct**

Scavengers and decomposers both are important. Scavengers break organic matter to smaller pieces. These smaller pieces are easily consumed by decomposers which break them into nutrients which are returned to the soil.

---

**9. C - Wood is bad conductor of heat where as metals are good conductor of heat.**

Wood is a bad conductor of heat and acts as insulator thus outer side of the vessel will feel normal.

---

**10. C - Both are correct**

Objects which produce their own light are called luminous objects. Moon does not produce its own light. It reflects the light of Sun, thus Moon is non-luminous object.

---

**11. B - C**

Feather helps birds in flying, maintaining their body temperature and sometime in camouflage. Kiwi is a small bird which protects itself from preying animals by camouflaging in its surrounding. Color of its feather completely blends it in its surrounding.

---

**12. B - B**

Venus is the hottest planet but Mars is known as "the red planet". Venus is known as "sister planet of the Earth".

---

**13. B - Fully blown balloon will be heavier**

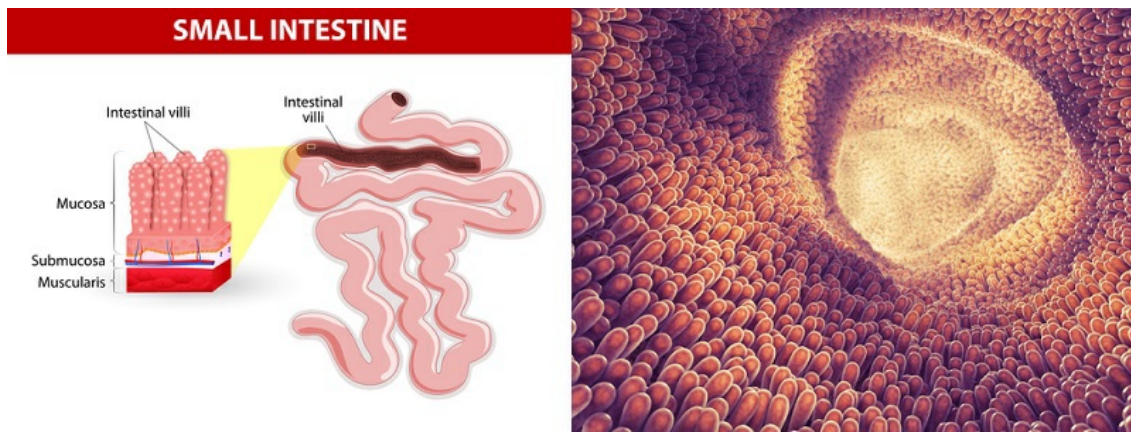
A fully blown balloon will have the weight of balloon and air particles.

---

**14. B - villi**

Tiny finger like structures are present on lining of small intestine. These structures absorb nutrients from digested food into the blood. Digestion of food ends at small intestine.

**14. B - villi**



---

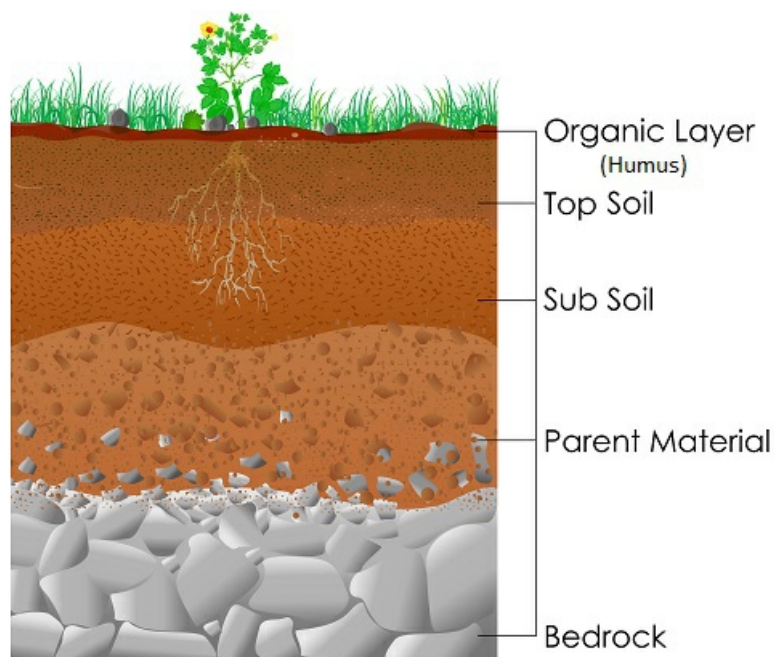
**15. B - Minerals**

Minerals are needed for strong bones and teeth.

---

**16. B - Ravi**

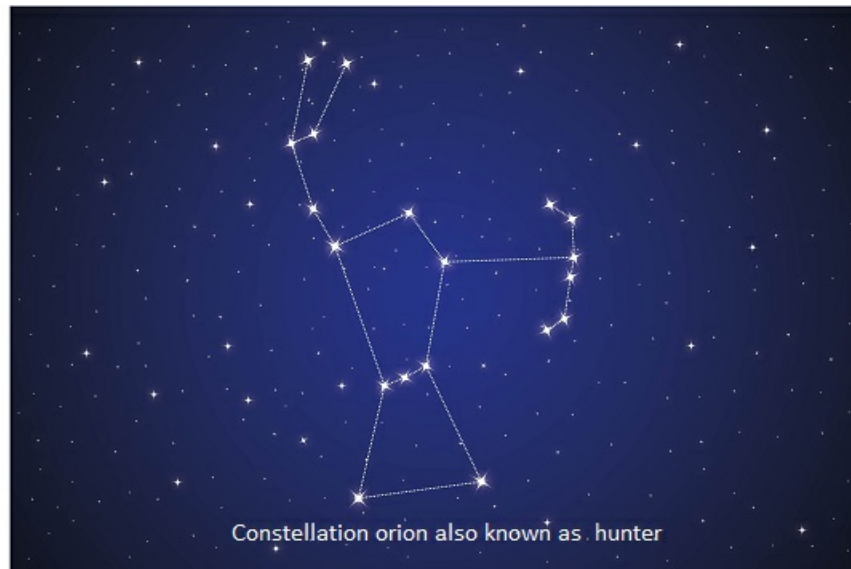
Humus is organic matter which is made up of dead plants and animals. Humus is very fertile and helps plants to grow. It forms the topmost layer of soil.



---

**17. D - The hunter**

Orion is known as the hunter.



---

**18. D - milk will occupy same space in both vessels.**

milk will occupy same space in both the vessels as the volume of liquid is same.

---

**19. B - slate**

Marble is formed by metamorphosis of limestone. Slate is formed by metamorphosis of shale or mudstone.

---

**20. A - A-3, B-1, C-4, D-2**

---

**21. C - C**

Water when turns into ice its volume increases.

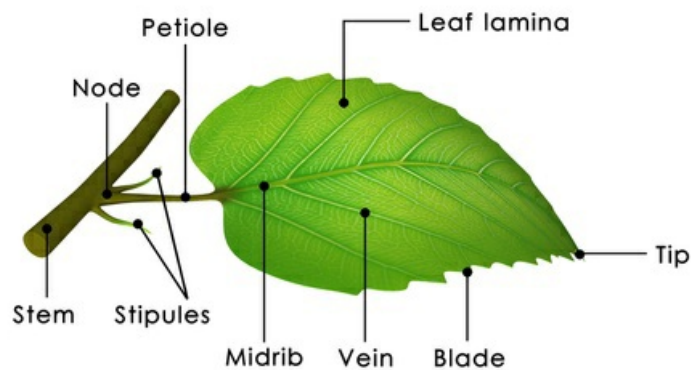
---

**22. D - A-Petiole, B-Lamina, C-Midrib**

Leaf has following major parts :

- 1) petiole: It connects leaf to stem or branch. It is also known as leaf stalk.
- 2) midrib - It is the main vein which transfers water and minerals from stem to different parts of leaves.
- 3) lamina or blade is the broad flat part of the leave
- 4) small leaf-like growth at the base of the leaf stalk.

22. D - A-Petiole, B-Lamina, C-Midrib



---

23. B - Amit

Freezing point and the melting point of water is same as 0 degree celcius.

---

24. A - A-4, B-2, C-1, D-3

Saliva is secreted by salivary glands.

Hydrochloric acid (HCL) and pepsin are secreted by the stomach. Pepsin helps in the digestion of proteins.

The liver secretes bile juice. Bile is useful for digesting and absorbing fats in the small intestine.

The pancreas secretes pancreatic juice that helps the body to break down carbohydrates, proteins and fats

---

25. C - Sheena and Tina

Bat is a mammal. It is not a bird. Birds are oviparous.

---